



# SINGLE GAS PERSONAL MONITOR

Gas Detection For Life

GasWatch 2 Model



## Features

- 3 gases to choose from CO, H2S, or O2
- Hands free gas monitoring
- Compact "watch type" design
- Fast, accurate response with digital LCD display
- Fits on your wrist, clothing, belt or hardhat
- Automatic backlight during alarm
- Manual backlight
- Sensor fail alarm
- PEAK hold function (min. and max. values for O2)
- TWA and STEL function
- Displays current time
- Visual, audible, and vibration alarms standard
- Over 3,000 hours of operation from 1 battery
- Intrinsically safe, CSA, C/US classified
- 2 year warranty

## Applications

- Worker safety
- Refineries
- Petrochemical facilities
- Sewage treatment plants
- Fire Departments
- Chemical plants
- Tunnels
- Mines
- Hazardous waste sites

The GasWatch 2 is the first single-gas monitor that can be comfortably worn on the wrist like a watch. The GasWatch 2 is a convenient, inexpensive, hands-free method of gas monitoring for personal protection from oxygen deficiency, carbon monoxide or hydrogen sulfide. The built-in vibrator, audible, and visual alarms immediately alert the user to a dangerous gas condition.

The GasWatch 2 is controlled by a microprocessor for reliability and advanced capabilities. Some of these advanced capabilities include distinctive audible and visual alarms for dangerous gas conditions and malfunctions, a large digital readout with a manual backlight that also automatically lights in an alarm condition, as well as the display of PEAK, TWA, and STEL readings. The replacement sensors are inexpensive, easily field replaceable, and have a life expectancy of about 2 years. Equipped with a watch band, optional belt clip, hard hat clip, or alligator clip, the GasWatch 2 can be worn either on the wrist, belt, hard hat, or clipped to protective wear.

The GasWatch 2 will operate for over 3,000 hours on one battery (about 1 year normal use). And yes, the GasWatch 2 even tells the time!

RKI Instruments, Inc. • 33248 Central Ave. Union City, CA 94587 • Phone (800) 754-5165 • (510) 441-5656 • Fax (510) 441-5650

World Leader In Gas Detection & Sensor Technology  
[www.rkiinstruments.com](http://www.rkiinstruments.com)

# GasWatch 2 Model

Model Name	GW – 2X		GW – 2H		GW – 2C	
Gas Detected	Oxygen (O2)		Hydrogen Sulfide (H2S)		Carbon Monoxide (CO)	
Detection Principle	Galvanic cell		Electrochemical cell		Electrochemical cell	
Detection Range (Increments)	0 – 40%vol. (0.1% vol.)		0 – 100 ppm (0.5 ppm)		0 – 500 ppm (1 ppm)	
Alarm Set Points	Low High Over	19.5% vol. 23.5% vol. 40.0% vol.	1st 2nd TWA STEL Over	10.0 ppm 30.0 ppm 10.0 ppm 15.0 ppm 100.0 ppm	1st 2nd TWA STEL Over	25 ppm 50 ppm 25 ppm 200 ppm 500 ppm
Alarm Types	Gas alarms: 2 level alarm (user adjustable), STEL, TWA, and over alarm Trouble alarms: sensor connection, low battery, circuit error, and calibration range error					
Alarm Methods	Gas alarms: flashing light, intermittent buzzer and pulsing vibration Trouble alarms: flashing light, intermittent buzzer and trouble type displayed					
Gas Sampling	Diffusion					
Response Time	T90 in 20 seconds (Alarms within 5 seconds when exposed to 12% O2)		T90 in 30 seconds			
Accuracy	+/- 0.5% vol.		+/- 1.5 ppm (up to 30 ppm)		+/- 5 ppm (up to 150 ppm)	
Power	One coin type lithium battery (CR 2450)					
Continuous Operation	Approximately 3,000 hours with no alarms or backlighting (about 1 year of normal use)					
Safety Rating	CSA classified, “C/US”, as intrinsically safe. Class I, Division 1, Groups A, B, C and D. Class I, Zone 0, Group IIC. Temperature code T4					
Dimension Weight	2.5”(W) x 1.7”(H) x 0.9”(D) / 63.5 mm(W) x 43 mm(H) x 23 mm(D) 2 ounces / 60 grams					
Case	High-impact plastic, dust and weather proof					
Attachment Choices	Watchband, alligator clip, belt clip, and hard hat clip					
Operating Temperature and Humidity	-10 ~ 40°C, (14 ~ 104° F) below 85% RH (non condensing)					
Special Functions	<ul style="list-style-type: none"><li>• LCD manual backlight (automatic lighting during alarm)</li><li>• STEL, TWA function</li><li>• Peak hold</li><li>• Time indication</li></ul>					
Warranty	Two years material & workmanship					

## Ordering Information

72-0007RK.....GW-2X with watch band  
 73-0040RK.....GW-2C with watch band  
 73-0041RK.....GW-2H with watch band  
 72-0007RK-01.....GW-2X with alligator clip  
 73-0040RK-01.....GW-2C with alligator clip  
 73-0041RK-01.....GW-2H with alligator clip

72-0007RK-02.....GW-2X with hardhat clip  
 73-0040RK-02.....GW-2C with hardhat clip  
 73-0041RK-02.....GW-2H with hardhat clip  
 72-0007RK-03.....GW-2X with belt clip  
 73-0040RK-03.....GW-2C with belt clip  
 73-0041RK-03.....GW-2H with belt clip

Specifications subject to change without notice.



A9812



ISO 9001:2000

Toll Free: (800) 754-5165 • Phone: (510) 441-5656  
 Fax: (510) 441-5650 • [www.rkiinstruments.com](http://www.rkiinstruments.com)

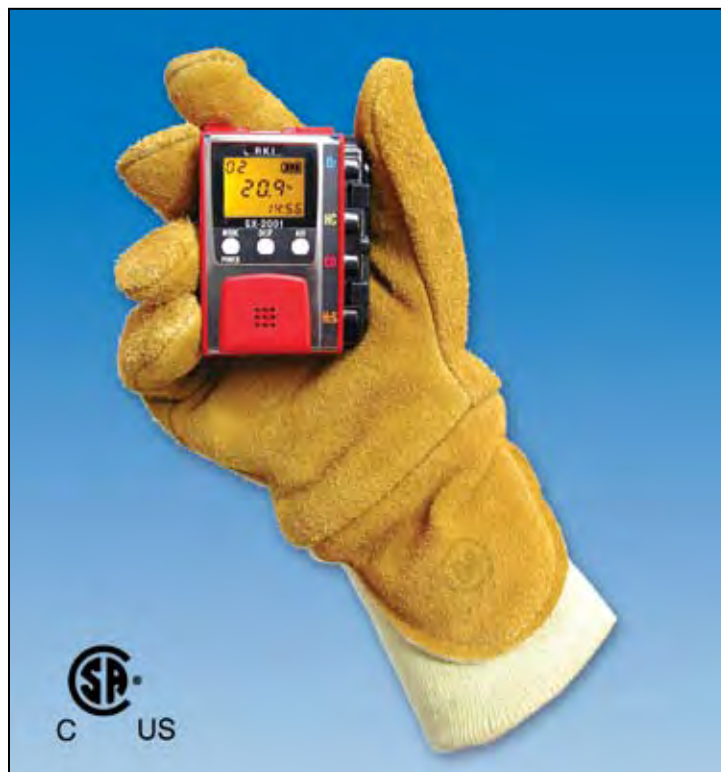
## Authorized Distributor:



# PERSONAL FOUR GAS MONITOR

Gas Detection For Life

**GX-2001 Model**



**Worlds Smallest 4 Gas Monitor**  
2.8" H x 2.2" W x 1.1" D

## Features

- Simultaneous detection of 4 gases LEL, O<sub>2</sub>, H<sub>2</sub>S and CO
- Smallest 4 gas monitor on the market 2.8" H x 2.2" W x 1.1" D, 6 oz.
- Audible, visual, & vibration alarms
- Alarm trend data
- Datalogging standard
- Autocalibration
- Rechargeable Ni-MH battery pack
- Battery pack recharges in 90 minutes
- Continuously operates for up to 18 hours
- Large LCD display screen
- Automatic backlighting at alarm
- High impact, RFI shielded body
- STEL and TWA readouts (USA Version)
- Continuously displays current time
- Intrinsically safe, CSA, C / US
- 2 year warranty

## Applications

- |                              |                                |
|------------------------------|--------------------------------|
| • Personal monitoring        | • Hazardous material           |
| • Confined spaces            | • Water / wastewater treatment |
| • Refineries / petrochemical | • Fire services                |
| • Utilities                  | • Mining                       |
| • Chemical plants            |                                |

RKI is proud to offer the smallest 4-gas monitor in the world, the GX-2001. Weighing only 6 ounces and about the size of a pager (2.8" H x 2.2" W x 1.1" D), the GX-2001 simultaneously monitors combustibles, oxygen, carbon monoxide, and hydrogen sulfide. The GX-2001 is armed with standard features like a vibration alarm, autocalibration, datalogging, rechargeable Ni-MH battery pack, STEL / TWA readings, peak hold and auto backlighting at alarm on a large LCD display, and it even tells the time! All of these controls and features are operated through 3 simple glow in the dark buttons. Utilizing either the standard charger or datalogging / charger station, the Ni-MH battery pack will operate for 18 hours and fully recharge in 90 minutes. Also available is the datalogging software program which is Windows 95, 98, ME, and XP compatible. The GX-2001 is also compatible with the Data Cal 2000 instrument maintenance system and SM-2001U calibration station.

The GX-2001 is designed around the world's smallest gas sensors. Utilizing catalytic combustion, electrochemical and galvanic sensor technologies, each miniaturized sensor is manufactured with the same high quality control that has made RKI sensors and instruments the most reliable and long lasting monitoring devices in the industry.

# GX - 2001 Model

<b>Gas Detected</b>	All Combustible Gases (Methane as standard)	Oxygen (O2)	Hydrogen Sulfide (H2S)	Carbon Monoxide (CO)
<b>Detection Principle</b>	Catalytic combustion	Galvanic cell	Electrochemical cell	
<b>Detection Range (Increments)</b>	0 ~ 100% LEL (1% LEL)	0 ~ 40.0% Vol. (0.1% Vol.)	0 ~ 100.0 ppm (0.5 ppm)	0 ~ 500 ppm (1 ppm)
<b>Sampling Method</b>	Diffusion sampling, standard hand aspirator or motorized pump optional			
<b>Display</b>	Digital LCD with 7 segments, auto backlight at alarm display automatically cycles every 3 seconds reading each gas, immediate reading for alarm condition.			
<b>Preset Alarms * (User Adjustable)</b>	1st alarm 10% LEL 2nd alarm 50% LEL Over alarm 100% LEL	Low alarm 19.5% High alarm 23.5% Over alarm 40.0%	1st alarm 10 ppm 2nd alarm 30.0 ppm TWA alarm 10 ppm STEL alarm 15 ppm Over alarm 100 ppm	1st alarm 25 ppm 2nd alarm 50 ppm TWA alarm 25 ppm STEL alarm 200 ppm Over alarm 500 ppm
<b>Types of Alarms</b>	Gas Alarm: 2 increasing alarms, STEL, TWA, overscale alarm Trouble alarm: Sensor disconnection, wire disconnection, low battery, circuit error, calibration range error			
<b>Display of Alarm</b>	Gas Alarm: Flashing LEDs, intermittent buzzer, flashing gas value, vibration Trouble alarm: Flashing LEDs, intermittent buzzer, display of error message			
<b>Special Functions</b>	Manual back light LCD (Automatic at alarm) STEL, TWA Peak hold Continuous display of current time Datalogging (40 hours) Alarm trend Direct charging in just 90 minutes Autocalibration			
<b>Operating Temp. &amp; Humidity</b>	14 to 104°F (-20° C ~ + 40°C), 0 to 85% RH, non-condensing (splash resistant)			
<b>Response Time</b>	Within 30 seconds (T90)			
<b>Continuous Operation</b>	Up to 18 hours			
<b>Power Source</b>	Direct charging NiMH battery pack, charges in just 90 minutes			
<b>Safety Design / Approvals</b>	CSA classified, "C / US", as Intrinsically Safe. Exia. Class I, Groups A, B, C, & D Class I, Zone 0, Group IIC. Temperature Code T3C			
<b>Dimension &amp; Weight</b>	2.8" H x 2.2"W x 1.1"D (Approx. 72 (H) x 56 (W) x 27 (D) mm) , 6 ounces (approx. 140g)			
<b>Case Material</b>	Dust & weather resistant. RFI shielded high impact plastic and stainless steel			
<b>Controls</b>	Three glow in the dark buttons: POWER / MODE, DISP, AIR			
<b>Required Accessories</b>	Battery charger (basic charger or datalogging charger)			
<b>Standard Accessories</b>	Wrist strap ..... 13-0112RK Belt clip (hard hat clip also available)..... 13-0202RK Ni-MH battery pack..... 49-1605RK			
<b>Optional Accessories</b>	Neck strap (Wrist strap is standard)..... 13-0113RK Padded carrying case for GX-2001 and accessories..... 20-0112RK-01 Protective rubber boot..... 20-0315RK Charger, 12 VDC, with cigarette lighter plug..... 49-2157RK Charger, 12VDC & 115 VAC dual input..... 49-2162RK Basic charger station, 115 VAC powered..... 49-2163RK-01 Datalogging / Charger station (IR) with cable and software for datalogging (Windows 95, 98, ME, XP, Vista, & NT) .. 49-2156RK-01 RP-6 sample drawing pump with hose and probe..... 81-1166RK Hand aspirated sample draw with hose and probe..... 81-1160RK GX-2001 docking module..... 81-DM2001 SM-2001U calibration station ..... 81-SM2001U Data Cal 2000 calibration station ..... 81-DC2000-02			
<b>Configurations</b>	•4 gas, LEL / O2 / H2S / CO •2 gas, LEL / O2 •2 gas, LEL / CO	•3 gas, LEL / O2 / H2S •2 gas, O2 / H2S •2 gas, LEL / H2S	•3 gas, LEL / O2 / CO •2 gas, O2 / CO •1 gas, LEL	
<b>Warranty</b>	Two years material and workmanship			

\* Canadian versions are available with unique alarm points, self reset alarms, auto zero, and no TWA/alarm.

Specifications subject to change without notice



A9812



ISO 9001:2000

Toll Free: (800) 754-5165 • Phone: (510) 441-5656  
Fax: (510) 441-5650 • [www.rkiinstruments.com](http://www.rkiinstruments.com)

## Authorized Distributor:





# CONFINED SPACE / BAR HOLE / LEAK DETECTOR

Gas Detection For Life

**GX-2003 Model**



## Features

- Three operating modes:  
Normal, Bar Hole, and Leak Check
- Monitors LEL, and % volume methane, O<sub>2</sub>, CO and H<sub>2</sub>S
- Barhole mode tests for peak methane and oxygen levels
- Leak detect mode offers high sensitivity tests for ppm level natural gas leaks
- 0 to 100% volume Methane
- Auto-ranging display of % volume and % LEL
- Internal sample drawing pump with up to 40 foot range
- Vibration, visual, and audible alarms
- Automatic backlight during alarms
- Calibration reminder with lock out option
- Ni-MH or alkaline power source (interchangeable)
- Quick charge (complete charge in 90 minutes)
- Glove friendly glow in the dark buttons
- Alarm latching or non-latching
- High impact protective rubber boot
- Up to 600 hours of datalogging with alarm trends
- Autocalibration or single calibration
- TWA and STEL readings with lunch-break mode
- Intrinsically safe, CSA, C/US classified
- 2 year warranty

Built around high-quality micro-sensor technology, the GX-2003 is RKI's smallest personal 5-in-1 gas monitor with a built in sample pump. Weighing only 11 ounces, it has many features which set the GX-2003 apart from the competition. For example, it can monitor the standard confined space gases (LEL combustibles, Oxygen content, Carbon Monoxide, and Hydrogen Sulfide), and it can also measure 100% volume Methane and dynamically display either % LEL, or % volume with its auto-ranging ability.

The GX-2003's large LCD display shows all gas readings, battery level, current time, and will automatically backlight in alarm conditions. This unit also has a special bar hole mode to facilitate locating underground gas leaks. A high sensitivity leak check mode is also included, and provides ppm level detection of gas leaks. A special variable frequency alarm helps to pinpoint the leak without looking at the instrument display. Other standard mode alarm types include vibration, visual, and audible alarms that can be set to latching or non-latching. Controlled by a microprocessor, the GX-2003 continuously checks itself for sensor connections, low battery, circuit trouble, low flow, and calibration errors. The GX-2003 can interchangeably operate on either a Ni-MH battery pack or 3 AA alkaline batteries. The batteries are simple to replace requiring no tools to access the battery compartment. The Ni-MH battery pack can receive a charge directly within the instrument or separately, allowing the unit to remain in service.

Calibration intervals and reminders are user adjustable and can be set to either go into alarm or to lock the user out of normal measurement mode once a calibration period has expired. Calibrations can be performed automatically or individually in single calibration mode. The GX-2003 is also compatible with the economical SM-2003 single channel calibration station.

**RKI Instruments, Inc. • 33248 Central Ave. Union City, CA 94587 • Phone (800) 754-5165 • (510) 441-5656 • Fax (510) 441-5650**

World Leader In Gas Detection & Sensor Technology  
[www.rkiinstruments.com](http://www.rkiinstruments.com)

# GX-2003 Model

<b>Gas Detected</b>	Combustible Gases (Methane as standard)	% Volume Methane	Oxygen (O2)	Hydrogen Sulfide (H2S)	Carbon Monoxide (CO)
<b>Detection Principle</b>	Catalytic combustion	Thermal conductivity	Galvanic cell	Electrochemical cell	
<b>Detection Range</b>	0 ~ 100% LEL	0 ~ 100% Vol.	0 ~ 40% Vol.	0 ~ 100 ppm	0 ~ 500 ppm
<b>Sampling Method</b>	Internal sample pump, flow rate nominal 0.5 LPM, includes hydrophobic filter				
<b>Display</b>	Digital LCD with 7 segments, auto backlight during alarm				
<b>Preset Alarms (User Adjustable)</b>	1st alarm 10% LEL 2nd alarm 50% LEL Over alarm 100% LEL	N/A	Low alarm 19.5% High alarm 23.5% Over alarm 40.0%	1st 10ppm 2nd 30ppm TWA 10ppm STEL 15ppm Over 100ppm	1st 25 ppm 2nd 50 ppm TWA 25 ppm STEL 200 ppm Over 500 ppm
<b>Alarms Types</b>	Gas alarms: 1st and 2nd (user adjustable), STEL, TWA and OVER Trouble alarms: Sensor connection, low battery, low flow, circuit trouble and calibration error				
<b>Alarm Methods</b>	Gas alarms: Flashing lights, two tone buzzer, and vibration Trouble alarms: Flashing lights, trouble displayed, intermittent buzzer, and vibration				
<b>Operating Temp. &amp; Humidity</b>	-20°C to +50°C (-4°F to 122°F) 0 to 85% RH, non-condensing				
<b>Response Time</b>	Within 30 seconds (T90)				
<b>Continuous Operation</b>	Alkaline battery: 14 hours Ni-MH battery: 16 hours				
<b>Power Source</b>	Ni-MH battery pack, direct or separate charge, or 3 "AA" Alkaline dry cell batteries; interchangeable				
<b>Safety Rating</b>	CSA classified, "C/US", as intrinsically safe. Class I, Division 1, Groups A, B, C, D				
<b>Dimension &amp; Weight</b>	Approx. 171 (H) x 65 (W) x 39 (D) mm (5.6" H x 2.5" W x 1.5" D), approx. 310 g (11 ounces)				
<b>Case Material</b>	Dust & splash resistant. RFI shielded high impact plastic with protective rubber boot				
<b>Controls</b>	Five buttons: POWER / ENTER, DISPLAY, AIR, RESET, SHIFT (glow in the dark)				
<b>Standard Accessories</b>	<ul style="list-style-type: none"> <li>• Wrist strap</li> <li>• 10" Probe</li> <li>• Rubber boot</li> <li>• 10' Hose</li> <li>• Manual</li> <li>• Training CD</li> <li>• Quick reference card</li> </ul>				
<b>Standard Accessories (Leak Check/ Bar Hole Versions)</b>	<ul style="list-style-type: none"> <li>• Wrist strap</li> <li>• 10" Probe</li> <li>• Rubber boot</li> <li>• Manual</li> <li>• 3' Hose</li> <li>• 10' Hose</li> <li>• 30" Bar hole probe</li> <li>• Training CD</li> <li>• Quick reference card</li> </ul>				
<b>Optional Accessories</b>	<ul style="list-style-type: none"> <li>• Datalogging software</li> <li>• Calibration kit</li> <li>• Data Cal 2000 or SM-2003 calibration stations</li> <li>• Sample draw hoses (10' standard, up to 40' max. available)</li> <li>• AC or DC Charger</li> <li>• Ni-MH battery pack</li> <li>• Carrying case</li> </ul>				
<b>Configurations</b>	3, 4, or 5 sensor units Ni-MH or alkaline battery options				
<b>Warranty</b>	Two years material and workmanship				

Specifications subject to change without notice.



A9812



ISO 9001

Toll Free: (800) 754-5165 • Phone: (510) 441-5656  
Fax: (510) 441-5650 • [www.rkiinstruments.com](http://www.rkiinstruments.com)

**Authorized Distributor:**



# PERSONAL FOUR GAS MONITOR

Gas Detection For Life

GX-2009 Model



Actual Size

**World's Smallest and Lightest  
4 Gas Monitor**

## Features

- Simultaneous detection of 4 gases
  - LEL, O<sub>2</sub>, H<sub>2</sub>S & CO
- Smallest/Lightest 4 gas monitor on the market
  - 2.7" H x 3" W x 1" D, 4.6 oz.
- Dual audible alarm ports (95 db @ 30 cm)
- 3 visual alarm LED's
- Vibration alarm
- IP-67 Waterproof/dustproof design
- Calibration lock out or reminder controls
- Large capacity data logging standard
  - 8 alarm trends
  - Log time range of 10 to 300 hours
  - 100 calibration records
- 20 hours of operation (NiMH batteries)
- Large LCD display screen
- Automatic backlighting at alarm
- Impact resistant over-mold body, RFI shielded body
- STEL and TWA readouts
- Intrinsically safe, CSA, C/US classified  
IECEX/ATEX approved
- 2 year warranty

## Applications

- |                            |                      |
|----------------------------|----------------------|
| • Personal monitoring      | • Hazardous material |
| • Confined spaces          | • Water/wastewater   |
| • Refineries/petrochemical | • Fire services      |
| • Utilities                | • Construction       |

RKI is proud to offer the smallest and lightest 4-gas monitor in the world, the GX-2009. Weighing only 4.6 ounces, it fits in the palm of your hand (2.75" H x 2.95" L x .98" D). The GX-2009 simultaneously monitors and displays combustibles, oxygen, carbon monoxide, and hydrogen sulfide. The GX-2009 represents the latest evolution of gas detection technology. Advancements include dual audible alarm ports and alarm LED's on 3 sides of the instrument, so that alarm conditions are obvious from multiple perspectives especially in high noise environments. Other features include a waterproof and dustproof design with IP 67 rating, an impact resistant rubber over-mold body that is RFI resistant, and a large capacity data logging system included as a standard feature.

Other standard features are vibration alarm, autocalibration, calibration lock out or reminder control, STEL / TWA readings, peak hold, auto backlighting at alarm on a large LCD display, and it even tells the time! All of these controls and features are operated through 2 simple glow-in-the dark, glove friendly buttons. The NiMH battery set will operate for 20 hours and will fully charge in 3 hours.

A huge capacity data logging function is a standard feature on all GX-2009 instruments, and will store up to 8 alarm trend sessions where readings are recorded 30 minutes before and after an alarm event. The data logging function has a 3,600 data point capacity with a log time range of 10 to 300 hours based on programmable interval times. The data logging software will also store up to 100 calibration records and is Windows XP and Vista compatible. The GX-2009 is also functional with the Data Cal 2000 instrument maintenance system and the SM-2009U single calibration station (available in 2009).

The GX-2009 is designed around RKI's compact and proven sensors, utilizing catalytic combustion, electrochemical and galvanic sensor technologies. Each miniaturized sensor is manufactured with the same high quality control that has made RKI sensors and instruments the most reliable and long lasting monitoring devices in the industry.

**RKI Instruments, Inc. • 33248 Central Ave. Union City, CA 94587 • Phone (800) 754-5165 • (510) 441-5656 • Fax (510) 441-5650**

World Leader In Gas Detection & Sensor Technology  
www.rkiinstruments.com

# GX - 2009 Model

<b>Gas Detected</b>	All Combustible Gases (Methane as standard)	Oxygen (O2)	Hydrogen Sulfide (H2S)	Carbon Monoxide (CO)
<b>Detection Principle</b>	Catalytic combustion	Galvanic cell	Electrochemical cell	
<b>Detection Range (Increments)</b>	0 ~ 100% LEL (1% LEL)	0 ~ 40.0% Vol. (0.1% Vol.)	0 ~ 100.0 ppm (0.5 ppm)	0 ~ 500 ppm (1 ppm)
<b>Sampling Method</b>	Diffusion sampling standard, hand aspirator or motorized pump optional			
<b>Display</b>	Digital LCD displays all four gases simultaneously, with auto back ght			
<b>Preset Alarms (User Adjustable)</b>	1st alarm 10% LEL 2nd alarm 50% LEL Over alarm 100% LEL	Low alarm 19.5% High alarm 23.5% Over alarm 40.0%	1st alarm 10 ppm 2nd alarm 30 ppm TWA alarm 10 ppm STEL alarm 15 ppm Over alarm 100 ppm	1st alarm 25 ppm 2nd alarm 50 ppm TWA alarm 25 ppm STEL alarm 200 ppm Over alarm 500 ppm
<b>Types of Alarms</b>	Gas Alarm: 2 increasing alarms, STEL, TWA, overscale alarm Trouble alarm: Sensor disconnection, wire disconnection, low battery, circuit error, calibration range error			
<b>Display of Alarm</b>	Gas Alarm: Flashing LEDs, intermittent buzzer (95 db @ 30 cm), flashing gas value, vibration Trouble alarm: Flashing LEDs, intermittent buzzer (95 db @ 30 cm), display of error message			
<b>Operating Temp. &amp; Humidity</b>	-4°F to 122°F (-20°C ~ +50°C), 0 to 95% RH, non-condensing (splash resistant)			
<b>Response Time</b>	Within 30 seconds (T90)			
<b>Continuous Operation</b>	20 hours after a 3 hour full charge (14 hours after 90 min charge)			
<b>Power Source</b>	Direct charging NiMH batteries, set of 2			
<b>Safety Design / Approvals</b>	IECEEx zone 0 Ex ia IIC T4; ATEX II 1G Ex ia IIC T4; CSA c ass f ed, "C/US", as ntr ns ca y safe. C ass I, D v s on 1, Groups A, B, C, D			
<b>Dimension &amp; Weight</b>	2.7" H x 3" W x 1" D (Approx. 70 H x 75 W x 25 D mm), 4.6 ounces (approx. 130 g)			
<b>Case Material</b>	RFI shielded high impact over molded rubber. Dust and waterproof with IP-67 approval.			
<b>Controls</b>	Two glow in the dark buttons: POWER / MODE, AIR			
<b>Datalogging</b>	Standard with all instruments. Stores 8 alarm trend events: 3,600 data point capacity with a log time range of 10 to 300 hours (based on programmable interval times); and stores up to 100 calibration records.			
<b>Required Accessories</b>	Battery charger			
<b>Standard Accessories</b>	Alligator clip ..... 13-0116RK NiMH batteries (set of 2) ..... 49-1609RK Charging Station with 115/220 VAC power supply (optional)..... 49-2170RK			
<b>Optional Accessories</b>	Belt Clip ..... 13-0117RK Padded carrying case for GX-2009 and accessories..... 21-0112RK-01 Charging station, 115/220 VAC powered for 2, 3, 4, or 5 instruments..... 49-2170RK-XX Charging station with 12 VDC power supply and vehicle adapter plug ..... 49-2171RK 12 VDC adapter with vehicle plug (does not include charger base)..... 49-2020RK RP-6 sample drawing pump with 10' hose and probe ..... 81-1166RK Hand aspirated sample draw with 10' hose and probe..... 81-1160RK			
<b>Configurations</b>	• 4 gas, LEL / O2 / H2S / CO • 2 gas, LEL / O2 • 3 gas, LEL / O2 / H2S • 2 gas, O2 / H2S • 3 gas, LEL / O2 / CO • 2 gas, O2 / CO			
<b>Warranty</b>	Two years material and workmanship			

Specifications subject to change without notice



A9812



ISO 9001

Toll Free: (800) 754-5165 • Phone: (510) 441-5656

Fax: (510) 441-5650 • [www.rkiinstruments.com](http://www.rkiinstruments.com)

## Authorized Distributor:





# DOCKING AND CALIBRATION STATION

Gas Detection For Life

Data Cal 2000



## Features

- Automated instrument management
- Simultaneously service up to 10 instruments
- Calibrations, bump tests, and data downloads automatically performed and archived
- Manage instruments and archive records by serial #, user ID, or station ID
- Services are automatic, on-demand, or custom intervals
- Each docking module equipped with built-in flow control and status indicators
- Approaching and past due service prompts
- Automatic quick charge in 90 minutes or less
- Alkaline recognition
- Single exhaust line for all instruments
- 5 inlet ports for separate gas mixtures
- Create and save a list of common gas mixtures
- Automatic tracking of cylinder expiration
- Save factory and user default configurations for uploading to instruments
- Password protect configuration controls
- Records are easily exportable as CSV data
- Software is Windows 98, NT, 2000, and XP compatible
- Operates on any Pentium II or higher PC

The RKI Data Cal 2000 Docking and Calibration Station is a comprehensive instrument management system which provides charging, downloading, calibration, bump testing, and configuration for our Model GX-2001 and GX-2003 gas detection instruments. The system has configuration capabilities for alarm setting, datalog and calibration interval, user and location ID, and many other instrument parameters. Factory and user default settings are available for upload to instruments. The Data Cal 2000 is supplied with PC software, power and serial cords, and operating instructions. The Data Cal 2000 power requirements are 115VAC, 50/60Hz. PC or laptop to be supplied by customer.

\*Specifications subject to change without notice.

Station & Modules	
81-DC2000	Data Cal 2000 docking station, includes station, power cord, serial cable, & PC software CD
81-DC2000-01	Data Cal 2000 docking station, includes station, power cord, serial cable, PC software CD, demand flow regulator, & cyl. of calibration gas
81-DM2001	Docking Module for GX-2001
81-DM2003	Docking Module for GX-2003
Calibration Gases & Regulators	
81-0154RK-02	LEL CH <sub>4</sub> /O <sub>2</sub> /CO/H <sub>2</sub> S, 58L
81-0155RK-02	LEL Hexane/O <sub>2</sub> /CO/H <sub>2</sub> S, 58L
81-0090RK-03	LEL CH <sub>4</sub> /O <sub>2</sub> /CO, 103L
81-0089RK-03	LEL Hexane/O <sub>2</sub> /CO, 103L
81-0013RK-05	50% Vol. CH <sub>4</sub> , 58L
81-0151RK-02	H <sub>2</sub> S/N <sub>2</sub> , 58L
81-0078RK-03	100% N <sub>2</sub> , 103L
81-0154RK	Demand Flow Regulator

RKI Instruments, Inc. • 33248 Central Ave. Union City, CA 94587 • Phone (800) 754-5165 • (510) 441-5656 • Fax (510) 441-5650

World Leader In Gas Detection & Sensor Technology  
www.rkiinstruments.com



# STAND ALONE CALIBRATION STATION

Gas Detection For Life

SM-2000 Series



## Features

- Stand alone system, no PC needed for operation
- Calibrate, bump test, charge, and archive data
- Software manages records by serial #, user ID, or station ID
- Each station is equipped with configuration control and status indicators
- User adjustable test times and tolerances
- Automatic quick charge of instrument in 90 minutes or less
- Alkaline recognition – will not attempt to charge alkaline batteries (SM-2003U)
- Exhaust line connection for test gas venting
- Records are stored as a tab delineated text file (.txt format can be imported into a spreadsheet)
- Software is Windows Vista, and XP compatible
- Operates on any Pentium II or higher PC
- USB port for downloading data to a USB flash drive
- USB flash drive included

## Models SM-2009U, SM-2001U & SM-2003U

The SM-2000 single module calibration station for the GX-2009, GX-2003, and GX-2001 portable gas monitors is a stand alone station that can calibrate, bump test, charge, and archive data without the need of a computer to operate. The module has 4 operating modes, which include bump test only, % volume methane bump/calibration (for the GX-2003), calibration only, and bump with automatic calibration (if the bump test fails). The SM-2000 modules are capable of storing up to 200 bump test or calibration records. To download the data each module includes a 64 MB USB flash drive. Also included is a software package to import the data from the USB drive and manage records by serial #, user ID, or station ID. Each module has user adjustable test times and tolerances to meet specific testing requirements. The charger within the module quick charges battery packs within 90 minutes and will recognize alkaline batteries. The Calibration Station power requirements are 115/230 VAC, 50/60Hz.

### Calibration Stations

81-SM2009U	GX-2009 Calibration station, includes power cord, USB flash drive, and software
81-SM2001U	GX-2001 Calibration station, includes power cord, USB flash drive, and software
81-SM2003U	GX-2003 Calibration station, includes power cord, USB flash drive, and software
81-SM2001UC	GX-2001 Calibration station, includes power cord, USB flash drive, and software (evaluated to Canadian electrical code safety standard)
81-SM2003UC	GX-2003 Calibration station, includes power cord, USB flash drive, and software (evaluated to Canadian electrical code safety standard)

### Calibration Gases & Regulators

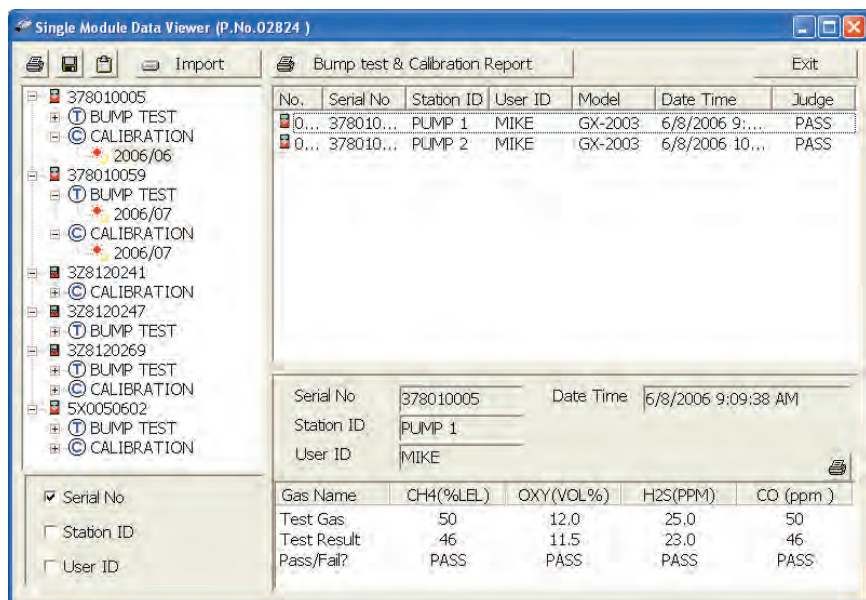
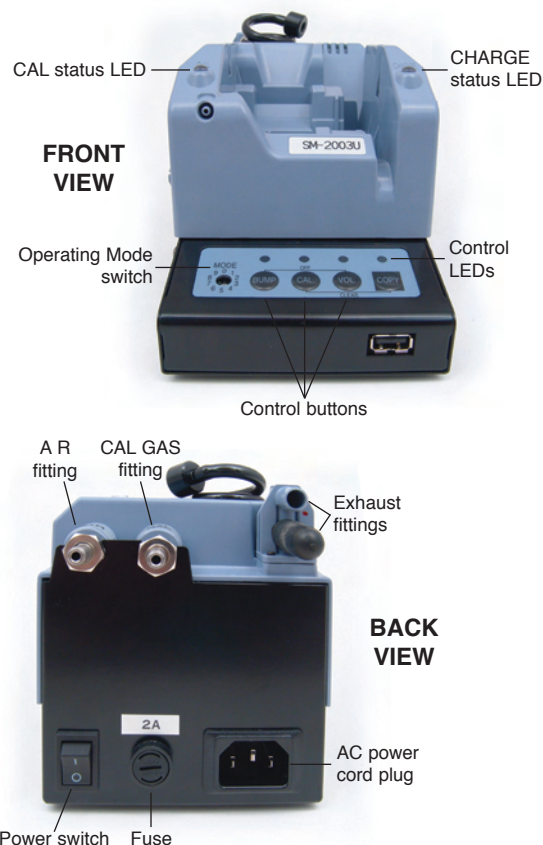
81-0154RK-02	LEL CH <sub>4</sub> /O <sub>2</sub> /CO/H <sub>2</sub> S, 58L
81-0155RK-02	LEL Hexane/O <sub>2</sub> /CO/H <sub>2</sub> S, 58L
81-0090RK-03	LEL CH <sub>4</sub> /O <sub>2</sub> /CO, 103L
81-0089RK-03	LEL Hexane/O <sub>2</sub> /CO, 103L
81-0016RK-05	100% Vol. CH <sub>4</sub> , 58L
81-0151RK-02	H <sub>2</sub> S/N <sub>2</sub> , 58L
81-0078RK-03	100% N <sub>2</sub> , 103L
81-1054RK	Demand Flow Regulator
06-1248RK-03	Calibration Tubing, Polyurethane (3/16" x 5/16" x 3')

RKI Instruments, Inc. • 33248 Central Ave. Union City, CA 94587 • Phone (800) 754-5165 • (510) 441-5656 • Fax (510) 441-5650

World Leader In Gas Detection & Sensor Technology  
www.rkiinstruments.com

# SM-2000 Series

<b>Input Power</b>	115/230 VAC, 50/60 Hz
<b>Environmental Conditions</b>	For indoor use only
<b>Operating Temp. &amp; Humidity</b>	-10°C to +40°C (-14°F to 104°F) 0 to 80% RH, non-condensing
<b>Applicable Instruments</b>	SM-2009U: GX-2009 SM-2001U: GX-2001 SM-2003U: GX-2003
<b>Operating Modes</b>	<ul style="list-style-type: none"> <li>• Bump test only</li> <li>• % Volume methane bump/calibration</li> <li>• Calibration only</li> <li>• Bump with automatic calibration (if bump fails)</li> </ul>
<b>Maximum Number of Records Saved</b>	200
<b>Standard Accessories</b>	<ul style="list-style-type: none"> <li>• AC Power Cord</li> <li>• Single Module Data Viewer Software</li> <li>• Inlet Air Filter</li> <li>• Instruction Manual</li> <li>• USB Flash Drive</li> </ul>



Main program window of PC based software for archiving viewing and printing data (included)



Specifications subject to change without notice.



A9812



ISO 9001

**Authorized Distributor:**

Toll Free: (800) 754-5165 • Phone: (510) 441-5656  
Fax: (510) 441-5650 • [www.rkiinstruments.com](http://www.rkiinstruments.com)