



Digital Correlating Loggers



- ◆ *ZCorr loggers are locally intelligent with auto-power management; no user intervention required.*
- ◆ *ZCorr software's familiar web browser interface is easy to use and easy to understand.*
- ◆ *The ZCorr system is expandable from 3 to an unlimited number of DCLs so it can grow with your leak detection program.*
- ◆ *ZCorr is fully upgradeable through software, making the latest technical advances available to all users.*



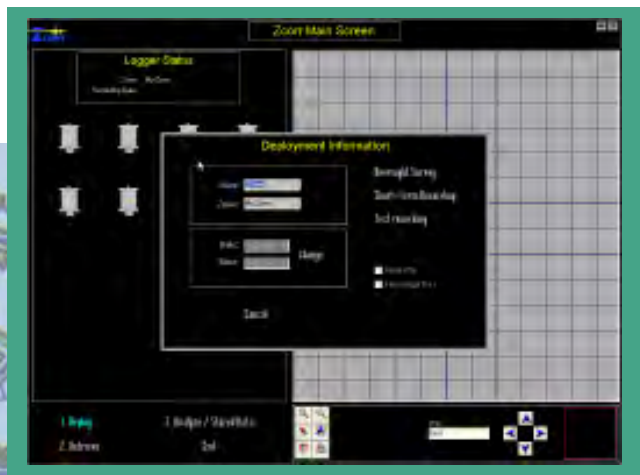
21st century leak detection

Planning

Now you can truly be in control of your leak detection program... *all from your desktop or field computer.*

ZCORR is a network of Digital Correlating Loggers (DCLs) which pinpoint the exact locations of any leaks in one overnight surveillance. The easy-to-use **ZCORR** software revolutionizes the ease and accuracy of pipeline leak detection and pinpointing.

ZCORR lets the leak detection manager plan the placement of the **ZCORR** DCLs and analyze and review the overnight recording results - *all from the comfort and convenience of the office!*

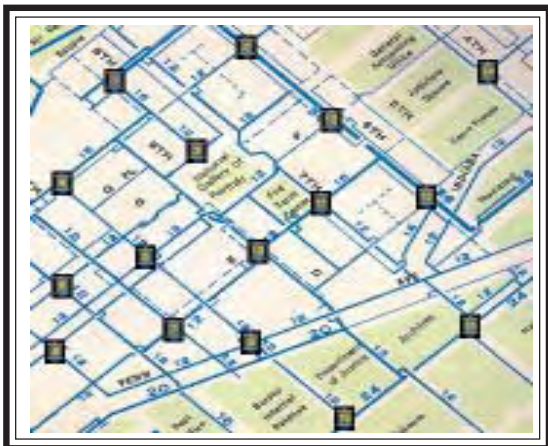


Deployment

ZCORR is flexibly designed for a variety of deployment strategies:

- ◆ One night - one zone
- ◆ Multiple nights - one zone
- ◆ Multiple nights - multiple zones

Deployment is planned by you, either in the office or in the field, working from your distribution system maps.



Sample Deployment Scenario

Deploy:

Enter the location of each Digital Correlating Logger (DCL); navigate the digitized map and click to place DCL at its location. DCLs are typically placed 400 to 4,000 feet apart depending on the environment.

A printed **ZCORR** Work Order directs field personnel to place DCLs on specific valves or other pipe fittings.

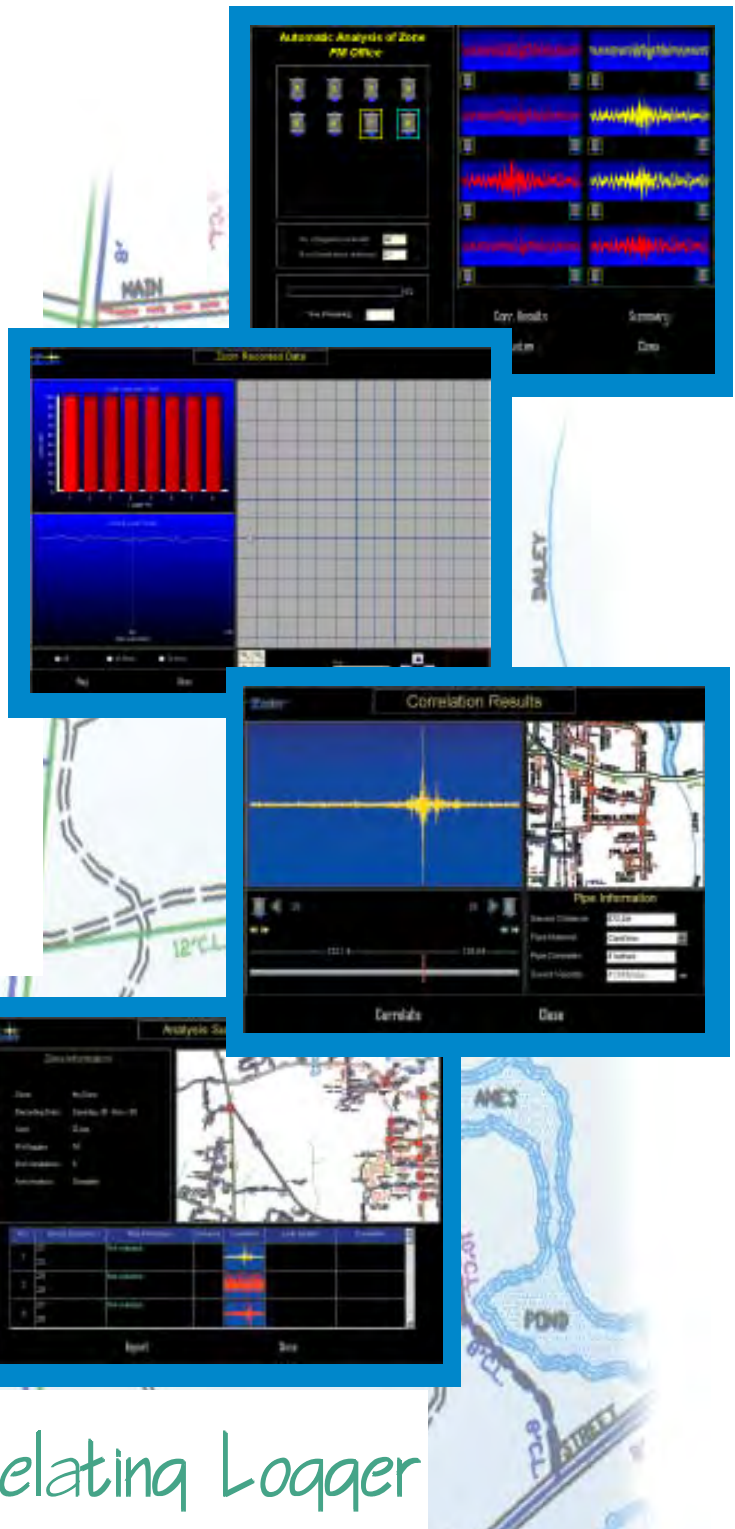
Retrieve:

The next morning field personnel replace the DCLs in their Docking Station. The Docking Station connects to your desktop PC, laptop, or rugged mobile computer via serial link.

Nighttime data recorded by the DCLs is transferred to the PC; permanently stored; and analysis is automatically performed, pinpointing the locations of any leaks present.

Analysis

- Auto Analysis:** **ZCORR** automatically correlates data among all DCLs, pinpointing the map locations of any leak sounds present. Click on any pair of DCLs to see the leak noise correlation.
- Listen:** **ZCORR** lets you listen to actual nighttime recorded leak sounds. Click on any logger symbol or leak index bar to hear the leak sound at that map location.
- Correlation Results:** Click on any thumbnail image to get a detailed analysis: pinpoint multiple leaks; enter pipe information; see logger and leak locations on map.
- Summary:** Shows a zone map with all DCLs and a summary table with all significant correlations and exact locations of pinpointed leak noises.
- Report:** Prints a full report of the **ZCORR** analysis for the entire zone.



ZCORR ... the Digital Correlating Logger

Feature	ZCORR	Conventional Noise Loggers	Permanently Installed Noise Loggers
Pinpoints leak	Yes	No	No
Actual audio recording	Yes	No	No
Upgradeable/Reprogrammable	Yes	No	No
Digital mapping	Yes	No	No
Identifies multiple leaks	Yes	No	No
Communication mode	Internet/Docking Station	Docking Station	Drive-by Radio

TECHNICAL SPECIFICATIONS

Digital Correlating Logger (DCL)

Enclosure: Aluminum, cylindrical

Protection: IP68 – fully submersible

Weight: 1.6 lb (725.7 grams)

Dimensions: Height = 5.0 inches (12.7 cm)
Diameter = 2.5 inches (6.35 cm)

Mounting: Magnet, 40 lbs (18 kg) pull force

Operating temperature range: -20 to +140°F (-30 to +60°C)

Power source: Lithium battery, 5-year life, factory-replaceable, non-rechargeable

Sensor: High resolution electronic accelerometer;
Shockproof to 6,000 g;
Sensitivity: 1 V/g;
Resolution: 0.25 $\mu\text{g}/\sqrt{\text{Hz}}$

Data acquisition: Frequency range: 1-3,000 Hz;
Signal range: sub 1 μg – 20 mg;
Digital resolution: 20 bits

Docking Station

Enclosure: Rugged ABS carrying case

Protection: IP68 - closed; IP65 - open

Weight: 15 lbs (6.8 kg) without DCLs

Dimensions: 16.0 x 13.0 x 6.87 inches (40.6 x 33 x 17.4 cm)

Operating temperature range: 20 to 140°F (-5 to +60°C)

Capacity: 3 to 8 DCLs

PC link: USB



Flow Metrix, Inc.

One Clock Tower Place
Suite 100
Maynard, MA 01754 USA
800.517.4737 (toll-free)
978.897.2033
978.897.1292 (fax)
www.flowmetrix.com